



POTSDAM-INSTITUT FÜR  
KLIMAFOLGENFORSCHUNG

**Originally published as:**

**van Vuuren, D. P., Edmonds, J., Kainuma, M., Riahi, K., Thomson, A., Hibbard, K., Hurtt, G. C., Kram, T., Krey, V., Lamarque, J. F., Masui, T., Meinshausen, M., Nakicenovic, N., Smith, S. J., Rose, S. K. (2011):** The representative concentration pathways: an overview. - *Climatic Change*, 109, 1-2, 5-31

DOI: [10.1007/s10584-011-0148-z](https://doi.org/10.1007/s10584-011-0148-z)

© [Springer](https://www.springer.com)

## The representative concentration pathways: an overview

Detlef P. van Vuuren · Jae Edmonds · Mikiko Kainuma · Keywan Riahi · Allison Thomson · Kathy Hibbard · George C. Hurtt · Tom Kram · Volker Krey · Jean-Francois Lamarque · Toshihiko Masui · Malte Meinshausen · Nebojsa Nakicenovic · Steven J. Smith · Steven K. Rose

Received: 17 September 2010 / Accepted: 21 June 2011 / Published online: 5 August 2011  
© The Author(s) 2011. This article is published with open access at Springerlink.com

**Abstract** This paper summarizes the development process and main characteristics of the Representative Concentration Pathways (RCPs), a set of four new pathways developed for the climate modeling community as a basis for long-term and near-term modeling experiments. The four RCPs together span the range of year 2100 radiative forcing values found in the open literature, i.e. from 2.6 to 8.5 W/m<sup>2</sup>. The RCPs are the product of an innovative collaboration between integrated assessment modelers, climate modelers, terrestrial ecosystem modelers and emission inventory experts. The resulting product forms a comprehensive data set with high spatial and sectoral resolutions for the period extending to 2100. Land use and emissions of air pollutants and greenhouse gases are reported mostly at a 0.5×0.5 degree spatial resolution, with air pollutants also provided per sector (for well-mixed gases, a coarser resolution is used). The underlying integrated assessment model outputs for land use, atmospheric emissions and concentration data were harmonized across models and scenarios to ensure consistency with historical observations while preserving individual scenario trends. For most variables, the RCPs cover a wide range of the existing literature. The RCPs are supplemented with extensions (Extended Concentration Pathways, ECPs), which allow

---

D. P. van Vuuren (✉) · T. Kram  
PBL Netherlands Environmental Assessment Agency, PO Box 303, 3720 AH Bilthoven,  
The Netherlands  
e-mail: Detlef.vanvuuren@pbl.nl

J. Edmonds · A. Thomson · G. C. Hurtt · S. J. Smith  
Joint Global Change Research Institute, Pacific Northwest National Laboratory  
and the University of Maryland, 5825 University Research Court, College Park, MD 20740, USA

M. Kainuma · T. Masui  
National Institute for Environmental Studies (NIES), Tsukuba, Japan

K. Riahi · V. Krey · N. Nakicenovic  
International Institute for Applied System Analysis, Schlossplatz 1, A2361 Laxenburg, Austria

K. Hibbard  
Atmospheric Sciences and Global Change Division, Pacific Northwest National Laboratory  
and the University of Maryland, 3200 Q Avenue K9-34, Richland, WA 99354, USA

climate modeling experiments through the year 2300. The RCPs are an important development in climate research and provide a potential foundation for further research and assessment, including emissions mitigation and impact analysis.

## 1 Introduction

Socio-economic and emission scenarios are used in climate research to provide plausible descriptions of how the future may evolve with respect to a range of variables including socio-economic change, technological change, energy and land use, and emissions of greenhouse gases and air pollutants. They are used as input for climate model runs and as a basis for assessment of possible climate impacts and mitigation options and associated costs. For better comparisons between various studies as well as easier communication of model results, it is preferable to use a common set of scenarios across the scientific community. In the past, several sets of scenarios have performed such a role, including the IS92 scenarios (Leggett et al. 1992) and, more recently, the scenarios from the Special Report on Emission Scenarios (SRES) (Nakicenovic et al. 2000).

As pointed out by Moss et al. (2010), the research community currently needs new scenarios. First, more detailed information is needed for running the current generation of climate models than that provided by any previous scenario sets. Second, there is an increasing interest in scenarios that explicitly explore the impact of different climate policies in addition to the no-climate-policy scenarios explored so far (e.g. SRES). Such scenarios would allow evaluating the “costs” and “benefits” of long-term climate goals. Finally, there is also an increasing interest in exploring the role of adaptation in more detail. This requires further integration of information for scenario development across the different disciplines involved in climate research. The need for new scenarios prompted the Intergovernmental Panel on Climate Change (IPCC) to request the scientific communities to develop a new set of scenarios to facilitate future assessment of climate change (IPCC 2007).

---

J.-F. Lamarque

Atmospheric Chemistry Division, National Center for Atmospheric Research, 3450 Mitchell Lane, Boulder, CO 80301, USA

M. Meinshausen

Potsdam Institute for Climate Impact Research (PIK), PO Box 601203, Telegrafenberg A31, 14412 Potsdam, Germany

N. Nakicenovic

Vienna University of Technology, Gusshausstrasse 25-29/37320, A1040 Vienna, Austria

S. K. Rose

Electric Power Research Institute, 3420 Hillview Avenue, Palo Alto, CA, USA

G. C. Hurtt

Department of Geography, University of Maryland, 2181 LeFrak Hall, College Park, MD 20742, USA

D. P. van Vuuren

Utrecht University, Utrecht, The Netherlands

The IPCC also decided such scenarios would not be developed as part of the IPCC process, leaving new scenario development to the research community.

The community subsequently designed a process of three phases (Moss et al. 2010):

- 1) Development of a scenario set containing emission, concentration and land-use trajectories—referred to as “*representative concentration pathways*” (RCPs).
- 2) A parallel development phase with climate model runs and development of new socio-economic scenarios.
- 3) A final integration and dissemination phase.

The main purpose of the first phase (development of the RCPs) is to provide information on possible development trajectories for the main forcing agents of climate change, consistent with current scenario literature allowing subsequent analysis by both Climate models (CMs) and Integrated Assessment Models (IAMs).<sup>1</sup> Climate modelers will use the time series of future concentrations and emissions of greenhouse gases and air pollutants and land-use change from the four RCPs in order to conduct new climate model experiments and produce new climate scenarios as part of the parallel phase. At the same time, IAMs will explore a range of different technological, socio-economic and policy futures that could lead to a particular concentration pathway and magnitude of climate change. The development of the RCPs in the first phase thus allows climate modelers to proceed with experiments in parallel to the development of emission and socio-economic scenarios, expediting the overall scenario development process (Moss et al. 2010).

A careful selection process was used to identify the RCPs, using criteria that reflected the needs of both climate scenario developers and users (see Section 2). Two important characteristics of RCPs are reflected in their names. The word “*representative*” signifies that each of the RCPs represents a larger set of scenarios in the literature. In fact, as a set, the RCPs should be compatible with the full range of emissions scenarios available in the current scientific literature, with and without climate policy. The words “*concentration pathway*” are meant to emphasize that these RCPs are not the final new, fully integrated scenarios (i.e. they are not a complete package of socio-economic, emission and climate projections), but instead are internally consistent sets of projections of the components of radiative forcing that are used in subsequent phases. The use of the word “*concentration*” instead of “*emissions*” also emphasizes that concentrations are used as the primary product of the RCPs, designed as input to climate models. Coupled carbon-cycle climate models can then as well calculate associated emission levels (which can be compared to the original emissions of the IAMs) (see Hibbard et al. 2007). In total, a set of four pathways were produced that lead to radiative forcing levels of 8.5, 6, 4.5 and 2.6 W/m<sup>2</sup>, by the end of the century (see Section 2). Each of the RCPs covers the 1850–2100 period, and extensions have been formulated for the period thereafter (up to 2300).

The papers in this Special Issue of Climatic Change describe the RCPs, and their development process. The current paper provides an overview of this process, and focuses on the set as a whole and on how models have been linked in a new, innovative process of

<sup>1</sup> In this document, the term climate models is used for all kinds of models used for studying the global climate system, such as Earth-System Models of Intermediate Complexity (EMICs), Atmosphere-Ocean coupled Global Circulation Models (AOGCMs) and Earth System Models (ESMs) (see for the definition of some of these model categories (Meehl and Hibbard 2006; Randall et al. 2007). The term Integrated Assessment Model refers to models that combine natural science and socio-economic aspects of climate change primarily for the purpose of assessing policy options for climate change control (see for instance (Weyant et al. 1996)).

scenario development. More specific information can be found in the related papers in this special issue, such as those by the four IAM teams describing the scenarios underlying each of the RCPs (Masui et al. 2011; Riahi et al. 2011; Thomson et al. 2011; Van Vuuren et al. 2011a). This special issue also includes several papers that describe how the information from the IAM models was subsequently processed. The paper by Granier et al. (2011) provides an assessment of a range of historical emissions data as context for the harmonized emissions used as a common starting point for the future trajectories of the RCPs. The paper by Lamarque et al. (2011) describes how information on air pollutant emissions was used for deriving future concentration and forcing scenarios for aerosols and ozone. The paper by Hurtt et al. (2011) is the first to harmonize land-use history data with future scenario data from multiple IAMs to form a single consistent, spatially gridded, set of scenarios on land-use change, to study human impacts on the past, present, and future Earth system. The paper by Meinshausen et al. (2011b) describes how the IAM's emission projections of long-lived greenhouse gases were harmonized and used for calculating concentration trajectories for these gases. Moreover, Meinshausen et al. (2011b) describes the Extended Concentration Pathways (ECPs) from 2100 to 2300. All together, the papers aim at documenting the complete development process, from initial IAM model results to the unique data set provided to support IPCC's Fifth Assessment Report (AR5).

The paper is structured as follows. First, we provide a more detailed description of the RCP development process. Subsequently, we describe the main characteristics of the RCPs. As the RCPs are intended to represent the concentration and emissions pathways in the broader scenario literature, this paper specifically compares them to those in the literature, including the underlying trends of key driving forces (population, income, energy and land use), emissions and concentrations. In the final section, we draw conclusions and provide guidance on the appropriate uses of the RCPs.

## 2 RCP development

### 2.1 Overall description of the methodology

In order to benefit from the progress in climate model development of the past decade, the climate modeling community requested additional information from IAMs than was available from previous scenario exercises. Representatives of the IAM modeling community<sup>2</sup> worked together with representatives of the CM community and others to facilitate the data transfer (laid down in a protocol on data exchange (Van Vuuren et al. 2008a)). Both as part of this process and based on discussions within the context of the IPCC, several design criteria were established (Moss et al. 2008). These criteria follow from their intended use to facilitate climate research and assessment:

- 1) The RCPs should be based on scenarios published in the existing literature, developed independently by different modeling groups and, as a set, be 'representative' of the total literature, in terms of emissions and concentrations (see further in this section); At the same time, each of the RCPs should provide a plausible and internally consistent description of the future;

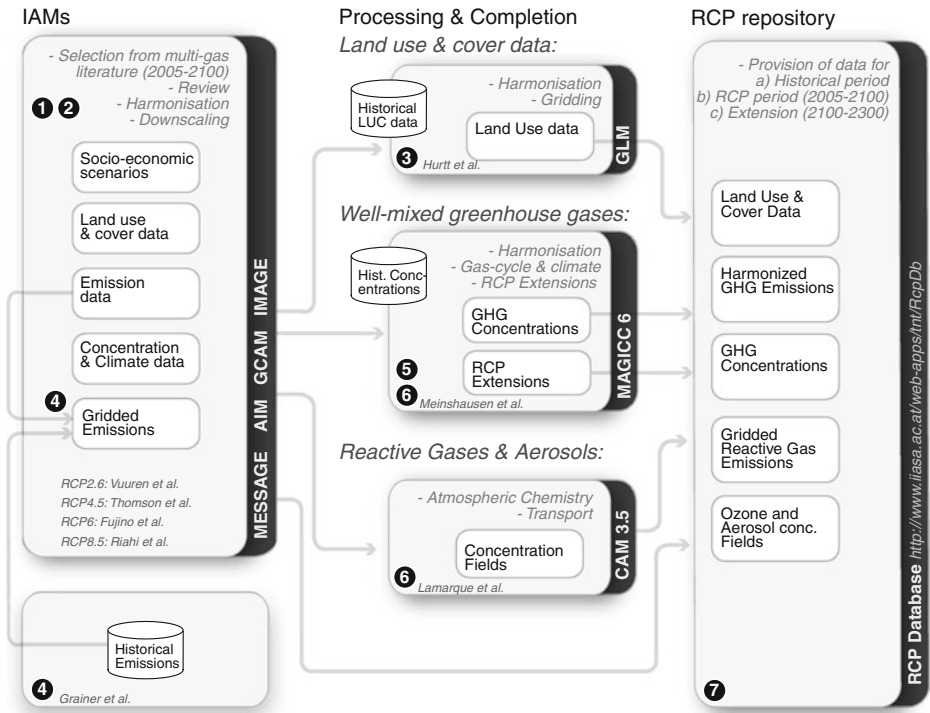
<sup>2</sup> The IAM modeling community was organized in the Integrated Assessment Modeling Consortium (IAMC); see <http://iamconsortium.org>.

- 2) The RCPs should provide information on all components of radiative forcing that are needed as input for climate modeling and atmospheric chemistry modeling (emissions of greenhouse gases, air pollutants and land use). Moreover, they should make such information available in a geographically explicit way;
- 3) The RCPs should have harmonized base year assumptions for emissions and land use and allow for a smooth transition between analyses of historical and future periods;
- 4) The RCPs should cover the time period up to 2100, but information also needs to be made available for the centuries thereafter.

The requirement that the RCPs are based on existing literature (criterion 1) is related to the scientific requirement of traceability, and follows existing IPCC guidelines on this. The term *representative of the total literature* is more complex. In the context of the RCPs it refers to emissions and land use and signifies that, as a set, the RCPs should be compatible with the full range of scenarios available in the current scientific literature, including extreme as well as intermediate scenarios. This requirement directly follows from the purpose of the RCPs to facilitate climate model runs that are relevant for policy-making and scientific assessment (and thus cover the full uncertainty range). The term refers to both the absolute level and the type of scenarios in the literature (e.g. scenarios without climate policy, stabilization scenarios and scenarios that first overshoot their target level). The notion was used as part of the IPCC decision on the development of new scenarios (IPCC 2007). A literature review revealed that scenarios can be found with a year 2100 radiative forcing from as low as  $2.5 \text{ W/m}^2$  to between 8 and  $9 \text{ W/m}^2$  and higher (Fisher et al. 2007; Van Vuuren and Riahi 2011). The RCP set, thus, should cover this range, but also include intermediate scenarios as the majority of the scenarios in the literature lead to intermediate forcing levels. In the discussion on this criterion, it was also decided that the total set should contain a manageable number of scenarios (in order to limit the number of climate model runs) and consist of an even number of scenarios (in order to avoid a clear middle scenario). Moreover, it was decided that the scenarios should be sufficiently separated (by about  $2 \text{ Wm}^{-2}$ ) in terms of the radiative forcing pathways to provide distinguishable climate results (Moss et al. 2008). The requirements of *plausibility* and *consistency* have been assured by basing the RCPs on published scenarios of integrated assessment models in the literature. Both terms are complex, but at minimum require the scenarios to be internally consistent, i.e. not include contradicting assumptions and judged as a plausible story of the future by experts. The second design criterion follows from the fact that the RCPs should provide the data needed for the current generation of climate models. The third criterion is based on the fact that climate model runs cover both historical and future periods, and a sudden transition would decrease their usefulness. Finally, the fourth criterion is based on the decision that scenarios should also enable exploration of slow climate processes.

These design criteria have clear implication for the development of the RCPs and their applications (see Section 4.2). In the next section, we first focus on the process and methods that were used for the development of the RCPs. The overall development method included 7 sequential steps (see also Fig. 1), most of which are directly related to the design criteria discussed above. These steps are all discussed in more detail in the subsequent sections:

- 1) Four existing scenarios were selected from the literature.
- 2) The four scenarios were updated to reflect advances in integrated assessment modeling and to use common base year emissions and land-use data, where possible. Preliminary releases by individual teams were subjected to internal review by the RCP research groups. This process resulted in several rounds of revision of the scenarios.



**Fig. 1** Overview of the RCP development process. Numbers refer to the different steps mentioned in Section 2.1

- 3) The land-use data of the RCPs were harmonized (i.e. made consistent with a selected set of base year data; see also the next sections) and downscaled (data were provided at a  $0.5 \times 0.5$  grid).
- 4) The emission data on the RCPs were harmonized and downscaled (to a  $0.5 \times 0.5$  grid) for air pollutants, i.e. aerosols and tropospheric ozone precursors.
- 5) The emission data were converted to concentration data, using a selected simple carbon-cycle climate model for well-mixed greenhouse gases and an atmospheric chemistry model for reactive short-lived substances.
- 6) Simple extensions of the RCPs for the 2100–2300 period were developed.
- 7) All relevant information has been made available for downloading, by using a central repository<sup>3</sup> (Table 1 provides an overview of the available information). This repository allows the user to preview and download data on emissions, concentrations, radiative forcing and land use—both at the level of aggregated regions and in gridded form.

In this paper, we discuss the overall process used to develop RCPs.

## 2.2 Scenario selection

In the first step of the scenario process, the design criteria of the RCPs were used as starting point for reviewing the scenario literature. This review mostly used the assessment in the

<sup>3</sup> <http://www.iiasa.ac.at/web-apps/tnt/RcpDb/>

**Table 1** Available information from RCPs and resolution

|  | Resolution (sectors)   | Resolution (geographical)  |
|--|--|--|
| Emissions of greenhouse gases  |  |  |
| CO <sub>2</sub>  | Energy/industry, land  | Global and for 5 regions   |
| CH <sub>4</sub>  | 12 sectors   | 0.5°×0.5° grid   |
| N <sub>2</sub> O, HFCs, PFCs, CFCs, SF <sub>6</sub>  | Sum  | Global and for 5 regions   |
| Emissions aerosols and chemically active gases   |  |  |
| SO <sub>2</sub> , Black Carbon (BC), Organic Carbon (OC), CO, NO <sub>x</sub> , VOCs, NH <sub>3</sub>                        | 12 sectors   | 0.5°×0.5° grid   |
| Speciation of VOC emissions  |  | 0.5°×0.5° grid   |
| Concentration of greenhouse gases (CO <sub>2</sub> , CH <sub>4</sub> , N <sub>2</sub> O, HFCs, PFCs, CFCs, SF <sub>6</sub> ) | –  | Global   |
| Concentrations of aerosols and chemically active gases (O <sub>3</sub> , Aerosols, N deposition, S deposition)               | –  | 0.5°×0.5° grid   |
| Land-use/land-cover data   | Cropland, pasture, primary vegetation, secondary vegetation, forests | 0.5°×0.5° grid with subgrid fractions, (annual maps and transition matrices including wood harvesting) |

Working Group III contribution to the IPCC's Fourth Assessment Report (see Fisher et al. 2007; Van Vuuren et al. 2008b). The review was conducted with the desirable characteristics in mind, i.e. coverage of the whole literature range and sufficient separation between the different scenarios (see also Table 2 columns 1 and 2). The review considered 324 scenarios, 37 of which (from 7 modeling teams) met the selection criteria. Based on the design criteria and discussions at an IPCC expert meeting in September 2007 (Moss et al. 2008), a total of 4 RCP radiative forcing levels were chosen (Table 2 column 3), including a proposal which existing scenarios could be used in the quantification of these RCPs. This proposal was made subject to an open review process and was subsequently accepted (Moss et al. 2008).<sup>4</sup>

The RCPs are named according to radiative forcing target level for 2100. The radiative forcing estimates are based on the forcing of greenhouse gases and other forcing agents.<sup>5</sup> The four selected RCPs were considered to be representative of the literature, and included one mitigation scenario leading to a very low forcing level (RCP2.6), two medium stabilization scenarios (RCP4.5/RCP6) and one very high baseline emission scenarios (RCP8.5). The first scenario (RCP2.6) has also been referred to as RCP3PD, a name that emphasizes the radiative forcing trajectory (first going to a peak forcing level of 3 W/m<sup>2</sup> followed by a decline (PD = Peak–Decline). The Fourth Assessment Report (AR4) identified only 6 scenarios that lead to

<sup>4</sup> The procedure chosen has certain strengths and weaknesses. For instance, the decision was made to choose representative scenarios from different IAM teams, increasing the diversity of outcomes. At the same time, this implies that differences between RCPs include more factors than only the targeted forcing level. In this paper, we discuss these issues and also indicate new experiments that will be performed to overcome some of the weaknesses.

<sup>5</sup> The forcing levels are relative to pre-industrial values and do not include land use (albedo), dust, or nitrate aerosol forcing.



**Table 2** Overview of representative concentration pathways (RCPs)

|        | Description <sup>a</sup>   | Publication—IA Model   |
|--------|--|--|
| RCP8.5 | Rising radiative forcing pathway leading to 8.5 W/m <sup>2</sup> (~1370 ppm CO <sub>2</sub> eq) by 2100.   | (Riahi et al. 2007)—MESSAGE  |
| RCP6   | Stabilization without overshoot pathway to 6 W/m <sup>2</sup> (~850 ppm CO <sub>2</sub> eq) at stabilization after 2100  | (Fujino et al. 2006; Hijioka et al. 2008)—AIM                      |
| RCP4.5 | Stabilization without overshoot pathway to 4.5 W/m <sup>2</sup> (~650 ppm CO <sub>2</sub> eq) at stabilization after 2100  | (Clarke et al. 2007; Smith and Wigley 2006; Wise et al. 2009)—GCAM |
| RCP2.6 | Peak in radiative forcing at ~3 W/m <sup>2</sup> (~490 ppm CO <sub>2</sub> eq) before 2100 and then decline (the selected pathway declines to 2.6 W/m <sup>2</sup> by 2100). | (Van Vuuren et al., 2007a; van Vuuren et al. 2006)—IMAGE           |

<sup>a</sup> Approximate radiative forcing levels were defined as  $\pm 5\%$  of the stated level in W/m<sup>2</sup> relative to pre-industrial levels. Radiative forcing values include the net effect of all anthropogenic GHGs and other forcing agents

forcing levels below 3 W/m<sup>2</sup>, but by now more than 20 scenarios in the literature lead to similar forcing levels as RCP2.6. RCP4.5 corresponds to the ‘category IV’ scenarios in AR4 (containing the far majority of the scenarios assessed in AR4, i.e. 118). The number of mitigation scenarios leading to 6 W/m<sup>2</sup> in the literature is relatively low (around 10)—but at the same time many baseline scenarios (no climate policy) correspond to this forcing level. Finally, RCP8.5 leads to a forcing level near the 90th percentile for the baseline scenarios, but a recent literature review was still able to identify around 40 scenarios with a similar forcing level.

The four IAM groups responsible for the four published scenarios that were selected as “predecessors” of the RCPs, generated the basic data sets from which the final RCPs were developed. The data requirements, specified in Table 1, include providing a full set of data relevant as forcing for climate change, such as information on emissions, concentrations and accompanying land use and land cover, in a consistent format. The RCP 8.5 was developed using the MESSAGE model and the IIASA Integrated Assessment Framework by the International Institute for Applied Systems Analysis (IIASA), Austria. This RCP is characterized by increasing greenhouse gas emissions over time, representative of scenarios in the literature that lead to high greenhouse gas concentration levels (Riahi et al. 2007). The RCP6 was developed by the AIM modeling team at the National Institute for Environmental Studies (NIES) in Japan. It is a stabilization scenario in which total radiative forcing is stabilized shortly after 2100, without overshoot, by the application of a range of technologies and strategies for reducing greenhouse gas emissions (Fujino et al. 2006; Hijioka et al. 2008). The RCP 4.5 was developed by the GCAM modeling team at the Pacific Northwest National Laboratory’s Joint Global Change Research Institute (JGCRI) in the United States. It is a stabilization scenario in which total radiative forcing is stabilized shortly after 2100, without overshooting the long-run radiative forcing target level (Clarke et al. 2007; Smith and Wigley 2006; Wise et al. 2009). The RCP2.6 was developed by the IMAGE modeling team of the PBL Netherlands Environmental Assessment Agency. The emission pathway is representative of scenarios in the literature that lead to very low greenhouse gas concentration levels. It is a “peak-and-decline” scenario; its radiative forcing level first reaches a value of around 3.1 W/m<sup>2</sup> by mid-century, and returns to 2.6 W/m<sup>2</sup> by 2100. In order to reach such

radiative forcing levels, greenhouse gas emissions (and indirectly emissions of air pollutants) are reduced substantially, over time (Van Vuuren et al. 2007a).

### 2.3 Scenario review and updates

The scenarios selected from the literature were published during the 2006–2007 period. Between initial scenario development and selection of an RCP, new historical data became available and modeling methods improved. In addition, the scenarios as published in their original form did not report the full suite and resolution of required RCP components. To take full advantage of the most recent developments, each team was encouraged to update their original scenario and expand their results—without changing the basic assumptions behind them. The updated scenarios are described in the papers included in this Special Issue. A review process was organized with members of the four integrated assessment modeling teams to evaluate the updated scenarios. An even more extensive review team was organized to review technical aspects of the lowest RCP (RCP2.6), because, at the time of its publication, there were very few scenarios that reached such low radiative forcing levels (Weyant et al. 2009).

### 2.4 Land use: harmonization and downscaling

Land-use and land-cover change play an increasingly important role in simulations in both the IAM and the CM communities (Hibbard et al. 2010). The terrestrial biosphere stores a large amount of carbon, and is critical for the provision of food, fuel, and fiber, as well as for climate mitigation. Many CMs now include dynamic land models to estimate both biophysical and biogeochemical feedbacks between land surface changes and climate. These models require consistent, spatially gridded data on land-use changes, historical to future, in a format amenable to carbon/climate studies. The diversity in requirements and approaches among IAMs and CMs for tracking land-use changes (past, present, and future) is significant. Moreover, projections must transition smoothly, from the historical period into the scenario period. For these reasons, treating land use comprehensively and consistently by both these communities is a critical challenge. To meet this challenge, an international working group, consisting of both IAM and CM community members, developed a strategy for harmonizing land-use data across IAM groups and consistent with the historical record in a data format appropriate for CMs (Hurtt et al. 2009). A harmonization between previous work used in regional studies (Hurtt et al. 2002), global historical reconstructions of land use for CMs (Hurtt et al. 2006), and recent applications of these products in new global dynamic land models (Shevliakova et al. 2009), produced a consistent set of  $0.5^\circ \times 0.5^\circ$  degree fractional coverage maps of annual land use (e.g. crop, pasture, urban, primary vegetation, secondary (recovering) vegetation), and corresponding underlying maps of annual land-use transition rates (i.e. the changes between land-use types), explicitly including both wood harvest and shifting cultivation, for the 1500–2100 period and representing each RCP.

Historical land-use data were based on the gridded maps of crop and pasture data from HYDE 3.1 1500–2005 (Klein Goldewijk et al. 2010), in combination with new historical national wood harvest and shifting cultivation estimates updated from Hurtt et al. (2006). For the future, agricultural and wood harvest data from IAMs were used (AIM, IMAGE, MESSAGE, and GCAM). To study sensitivity, more than 1600 complete global reconstructions were developed and analyzed. Land-use harmonization is described in detail, in a separate paper included in this issue (Hurtt et al. 2011).

## 2.5 Gridded emissions: harmonization and downscaling

Climate models have increasingly added detailed descriptions of the sources, sinks and atmospheric chemistry of both greenhouse gases and air pollutants. Consequently, the most advanced climate models now require, in addition to concentrations or emissions of greenhouse gases (CO<sub>2</sub>, CH<sub>4</sub>, N<sub>2</sub>O and halocarbons), emissions of reactive gases and aerosol precursor compounds (SO<sub>2</sub>, NO<sub>x</sub>, VOC, BC, OC and NH<sub>3</sub>), to model atmospheric chemistry and interactions with the climate system.<sup>6</sup> For most variables, a sectoral differentiation would improve the quality of the calculations (e.g. from power plants and agricultural burning). For example, some emission sources are located at a specific height (industrial emissions and power emissions occur generally at a higher level than emissions from buildings); other emission categories may be modeled endogenously in more complex models (land use). A set of 12 sectors was agreed on as a common reporting format for all air pollutants: air transportation; international shipping; other transportation (surface transport); electric power plants, energy conversion, extraction and distribution; solvents; waste (landfill, waste water, non-energy incineration); industry (combustion and process emissions); domestic (residential and commercial buildings); agricultural waste burning on fields; agriculture (agricultural soil emissions, other agriculture); savannah burning; and forest burning. For all reactive gases and aerosol precursor compounds, emissions were reported at 0.5×0.5 degrees.

IAMs used different inventory data to calibrate their base year emission levels—and thus year 2000 emissions are somewhat different across the models. In order to ensure consistency with historical data, a harmonization process was applied for all RCPs.<sup>7</sup> For emissions provided at a gridded level, the year 2000 was chosen as base year, as it was the most recent year for which a full data set on polluting emissions could be generated (Lamarque et al. 2010). For the historical period up through 2000, originally, no consistent long-term data series were available with the required amount of detail. For the purpose of the RCPs (in cooperation with the work of the task force on hemispheric transport of air pollutants), the data have been compiled by combining several existing emission inventories including the EDGAR and EDGAR-HYDE datasets (EC-JRC/PBL 2009; Van Aardenne et al. 2001). The compilation of this data set is fully described by (Lamarque et al. 2010) and additional information on recent trends is available in this issue (Granier et al. 2011).

The harmonization and downscaling of air pollution emissions was done by the individual IAM teams. The GCAM team changed their historical calibrations to the compiled input data described above, while the AIM, IMAGE and MESSAGE teams used a multiplier, linearly converging to one over the 21st century, to ensure consistency with historical data for the year 2000. For downscaling, the IMAGE and GCAM teams used the simple algorithms proposed by Van Vuuren et al. (2007b), while the MESSAGE and AIM teams used the more complex algorithms proposed by Grübler et al. (2007). More detail on downscaling is provided in the individual papers included in this issue (Masui et al. 2011; Riahi et al. 2011; Thomson et al. 2011; Van Vuuren et al. 2011a).

<sup>6</sup> The greenhouse gases covered in the RCP work include carbon dioxide (CO<sub>2</sub>), methane (CH<sub>4</sub>), nitrous oxide (N<sub>2</sub>O) and halocarbon emissions. The air pollutants include sulfur dioxide (SO<sub>2</sub>), nitrogen oxides (NO<sub>x</sub>), volatile organic compounds (VOC), carbon monoxide (CO), organic carbon (OC), black carbon (BC), and ammonia (NH<sub>3</sub>).

<sup>7</sup> The term harmonization is defined as a procedure whereby emission outputs from the IAMs are adjusted in such a way that emissions in the reference year are equal to some reference data set (with these adjustments extended into the future, in some manner, to assure smooth data sets).

## 2.6 Concentrations

Most CM experiments based on RCPs will be driven by greenhouse gas concentrations (Hibbard et al. 2007).<sup>8</sup> Furthermore, many Earth system models do not contain a full atmospheric chemistry model, and thus require exogenous inputs of three-dimensional distributions for reactive gases, oxidant fields, and aerosol loadings. Two methods were used to harmonize data on concentrations in order to provide a complete set of data needed for climate model simulations.

For reactive gases, ozone precursors and aerosols (CH<sub>4</sub>, SO<sub>2</sub>, NO<sub>x</sub>, NH<sub>3</sub>, CO, VOC, BC, OC), the atmospheric chemistry model CAM3.5 (Community Atmosphere Model (Gent et al. 2009)) was used to generate gridded concentration data as input for the climate models that need these fields. This model includes both tropospheric and stratospheric chemistry (for details, see (Lamarque et al. 2011)). The model is driven by the gridded, harmonized future emissions from the four RCPs, including data on the common year 2000 as well as the generated concentrations generated for long-lived GHGs. Output data of interest include concentration fields for ozone, aerosols and deposition fields. Further assessments will take place, as simulations using these emissions are conducted with other chemistry models.

For well-mixed greenhouse gases, harmonization of both emission and concentration data were performed using the MAGICC6 model (Meinshausen et al. 2011a; Meinshausen et al. 2011c). For tropospheric ozone, the MAGICC6 results were compared to the CAM3.5 model results, showing similar results, except for the high emissions RCP8.5 scenario (see (Lamarque et al. 2011)). The harmonization of the well-mixed GHGs (CO<sub>2</sub>, CH<sub>4</sub>, N<sub>2</sub>O, eight HFCs, three PFCs, SF<sub>6</sub> and sixteen ozone depleting substances controlled under the Montreal Protocol) was based on historical emission and observed concentration data. Future emissions were made consistent with estimated emissions for the year 2005, using a correction factor in such a way that, for most gases, emissions are equal to the “native” IAM output by 2050. Thus, the change introduced by harmonization was small. The methods are fully described in Meinshausen et al. (2011b).

## 2.7 ECPs: extensions beyond 2100

The IAMs provide information up to the year 2100, however the climate modeling community wished to conduct multi-century projections, to explore long-term responses in the climate and ocean systems. Therefore, to facilitate this long-term climate system research, the RCPs were extended to 2300. Given large uncertainties related to long-term driving forces of emissions (e.g. demography, policies, technology, and investment), we chose not to develop socio-economic projections beyond 2100, but instead to use simple rules to extend the concentration, emissions, and land-use data series. To emphasize the different methods used in creating the RCPs and the extensions, the latter are referred to as Extended Concentration Pathways (ECPs). It should thus be noted that the ECPs were designed as highly stylized pathways that are only intended to allow climate modeling simulations beyond 2100. The detailed extension procedures and additional results are provided in the paper by Meinshausen et al. (2011b), included in this issue. The basic rules applied for developing the ECPs are indicated in Table 3.

A single ECP extension was developed for each of the RCPs. The impact research community indicated that they would also be interested in an additional, supplementary

<sup>8</sup> Most of these experiments are part of the so-called CMIP-5 model intercomparison project, which has been set up as a major input into AR5. <http://cmip-pcmdi.llnl.gov/cmip5/>

**Table 3** Basic rules for deriving extended concentration pathways

| Parameter                                 | ECP       | Generic rule   |
|---|-----------|--|
| CO <sub>2</sub> and other well-mixed GHGs | ECP8.5    | Follow stylized emission trajectory that leads to stabilization at 12 W/m <sup>2</sup> |
|   | ECP6      | Stabilize concentrations in 2150 (around 6.0 W/m <sup>2</sup> )                        |
|   | ECP4.5    | Stabilize concentrations in 2150 (around 4.5 W/m <sup>2</sup> )                        |
|   | ECP3PD    | Keep emissions constant at 2100 level  |
|   | SCP6to4.5 | Return radiative forcing of all gases from RCP6.0 to RCP4.5 levels by 2250             |
| Reactive gases                            | All ECPs  | Keep constant at 2100 level  |
|   | SCP6to4.5 | Scale forcing of reactive gases with GHG forcing                                       |
| Land use                                  | All ECPs  | Keep constant at 2100 level  |

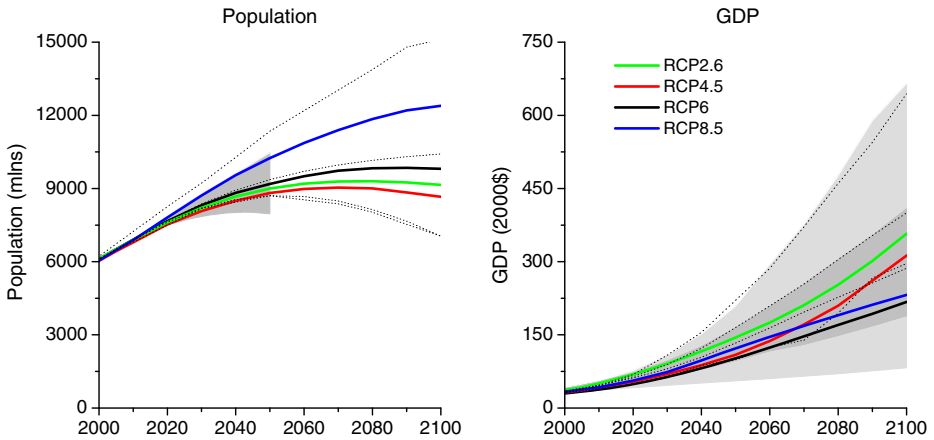
scenario—a post-2100 peak and decline extension of the RCP6, which would stabilize at 4.5 W/m<sup>2</sup>. In combination with the stabilizing ECPs (ECP4.5 and ECP6), this peak and decline extension would facilitate research into physical asymmetries and reversibility of climate, carbon cycle, and biophysical impacts systems (e.g. ecosystems, sea level rise). The scientific working group of the IAMC on RCPs, in collaboration with the IAV research community as represented by the IPCC WGII TSU, agreed to develop a supplemental extension to the RCP6, which would peak at 6 W/m<sup>2</sup> in 2100 and decline and stabilize at 4.5 W/m<sup>2</sup> in the following centuries. The supplemental extension is referred to as SCP6to4.5. The core post-2100 extension of RCP6 (Representative Concentration Pathway to 6 W/m<sup>2</sup>), known as ECP6 (Extended Concentration Pathway to 2300 for RCP6), reaches 6 W/m<sup>2</sup> and stabilizes at that level of radiative forcing. This extension is consistent with the original desired pathway characteristics for this RCP (Moss et al. 2008, 2010).

### 3 RCP results

#### 3.1 Driving forces

The RCPs were selected from the existing literature on the basis of their emissions and associated concentration levels. This implies that the socio-economic assumptions of the different modeling teams were based on individual model assumptions made within the context of the original publication, and that there is no consistent design behind the position of the different RCPs relative to each other for these parameters. Scenario development after the RCP phase (Section 1) will focus on developing a new set of socio-economic scenarios. Therefore, socio-economic parameters have not been included in the RCP information available for download. Still, this information does form part of the underlying individual scenario development, and thus provides useful information on internal logic and the plausibility of each of the individual RCPs. Here, their primary characteristics are discussed only in this context.

The population and GDP pathways underlying the four RCPs are shown in Fig. 2. The figure also shows, as reference, the UN population projections and the 90th percentile range of GDP scenarios in the literature on greenhouse gas emission scenarios. Figure 2 shows the RCPs to be consistent with these two references. It should be noted that, with one exception (RCP8.5), the modeling teams deliberately made intermediate assumptions about



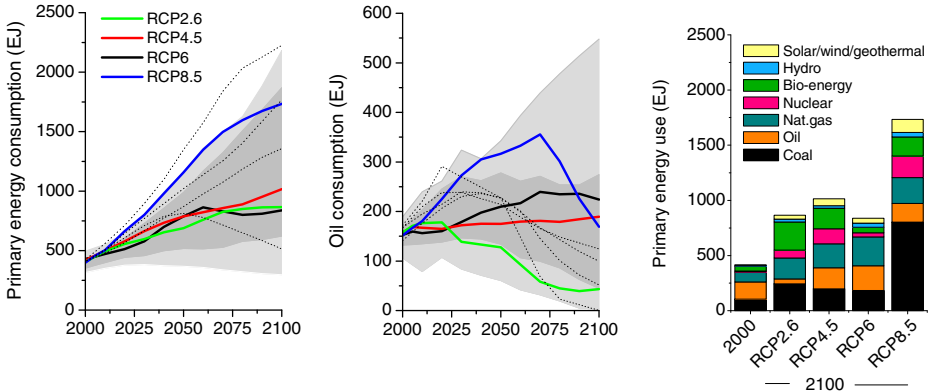
**Fig. 2** Population and GDP projections of the four scenarios underlying the RCPs. Grey area for population indicates the range of the UN scenarios (low and high) (UN 2003). Grey area for income indicates the 98th and 90th percentiles (*light/dark grey*) of the IPCC AR4 database (Hanaoka et al. 2006). The dotted lines indicate four of the SRES marker scenarios

the main driving forces (as illustrated by their position in Fig. 2) (see the relevant papers elsewhere in this Special Issue). In contrast, the RCP8.5 was based on a revised version of the SRES A2 scenario; here, the storyline emphasizes high population growth and lower incomes in developing countries.

For energy use, the scenarios underlying the RCPs are consistent with the literature—with the RCP2.6, RCP4.5 and RCP6 again being representative of intermediate scenarios in the literature (resulting in a primary energy use of 750 to 900 EJ in 2100, or about double the level of today)<sup>9</sup> (Fig. 3). The RCP8.5, in contrast, is a highly energy-intensive scenario as a result of high population growth and a lower rate of technology development. In terms of the mix of energy carriers, there is a clear distinction across the RCPs given the influence of the climate target (for details, see the papers elsewhere in this Special Issue). Total fossil-fuel use basically follows the radiative forcing level of the scenarios; however, due to the use of carbon capture and storage (CCS) technologies (in particular in the power sector), all scenarios, by 2100, still use a greater amount of coal and/or natural gas than in the year 2000. The use of oil stays fairly constant in most scenarios, but declines in the RCP2.6 (as a result of depletion and climate policy). The use of non-fossil fuels increases in all scenarios, especially renewable resources (e.g. wind, solar), bio-energy and nuclear power. The main driving forces are increasing energy demand, rising fossil-fuel prices and climate policy. An important element of the RCP2.6 is the use of bio-energy and CCS, resulting in negative emissions (and allowing some fossil fuel without CCS by the end of the century).

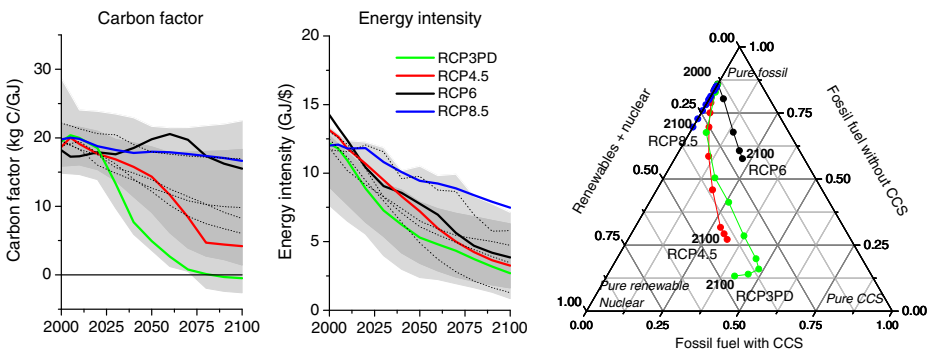
The Kaya identity describes future emission levels as a simple multiplicative function of population, income per capita, energy per unit of income (energy intensity) and emissions per unit of primary energy (carbon factor) (Kaya 1989; Ehrlich 1971) (Fig. 4). These factors are often used to provide insight into scenario trends. The figure shows all RCPs to be above the mean values in the literature for energy intensity which is caused mostly by the

<sup>9</sup> For reporting primary energy use, the direct-equivalent accounting method is used as in the SRES. This implies that energy from all non-combustible sources (nuclear and non-biomass renewable) is reported as secondary energy, i.e. one unit of electricity or heat generated from non-combustible sources is reported as one unit of primary energy.



**Fig. 3** Development of primary energy consumption (direct equivalent) and oil consumption for the different RCPs. The grey area indicates the 98th and 9th percentiles (*light/dark grey*) (AR4 database (Hanaoka et al. 2006) and more recent literature (Clarke et al. 2010; Edenhofer et al. 2010)). The dotted lines indicate four of the SRES marker scenarios

inclusion of traditional fuels. Analysis of the Kaya factors shows the influence of the radiative forcing targets, and indicates that the scenarios underlying the RCPs cover the full range of possible values reasonably well. RCP2.6 achieves most of its emission reductions by reducing the carbon factor (changes in supply mix) but is also the lowest scenario in terms of energy intensity, although much lower values are found in the literature. RCP6 and RCP8.5 both show a rather constant trend for the carbon factor (heavy reliance on fossil fuels), but are very different in terms of the development of energy intensity (high for RCP8.5 and intermediate for RCP6). Finally, RCP4.5 shows trends that are very similar to those in RCP2.6, but far less extreme.



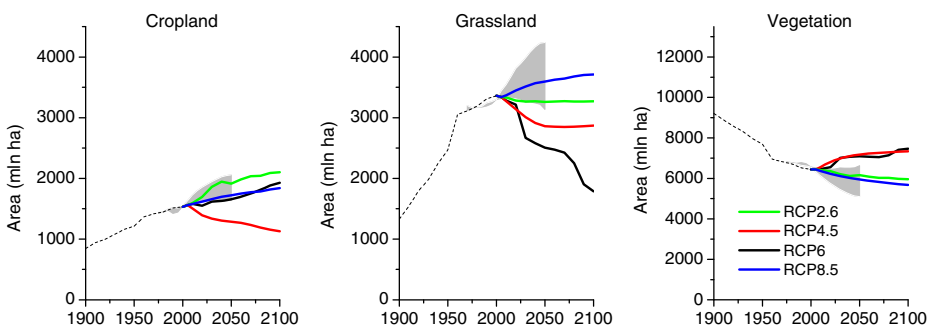
**Fig. 4** Carbon and energy intensities for the RCPs, and ternary graph representation of the fractions of different types of energy technologies. Grey area indicates the 98th and 9th percentiles (*light/dark grey*) of the literature (AR4 database (Hanaoka et al. 2006) and more recent literature (Clarke et al. 2010; Edenhofer et al. 2010)). The dotted lines indicate four of the SRES marker scenarios. On the ternary graph, each point forms a combination of 3 fractions that together add to 1. The fraction of fossil fuel without CCS is indicated by the horizontal lines to the right (diagonal) axis; the fraction of fossil fuel with CCS by diagonal lines from upper right to lower left on the vertical axis; the fraction of renewables and nuclear by the diagonal lines in the opposite direction to the left (diagonal) axis. All scenarios start near the upper corner in 2000 (almost only fossil fuel use without CCS)

### 3.2 Land use

A crucial element of the new scenarios is land use. Land use influences the climate system in many different ways including direct emissions from land-use change, hydrological impacts, biogeophysical impacts (such as changes in albedo and surface roughness), and the size of the remaining vegetation stock (influencing CO<sub>2</sub> removal from the atmosphere). Historically, cropland and anthropogenic use of grassland have both been increasing, driven by rising population and changing dietary patterns. There are far fewer land-use scenarios published in the literature than emission or energy-use scenarios. Moreover, far less experience exists with scenario projections (Rose et al. 2011; Smith et al. 2010). Most projections focus on a shorter time period (up to 2030 or 2050) and show an increasing demand for cropland and pasture.

The limited experience in global land-use modeling as part of integrated assessment work is also reflected in the RCP development process. Compared to emission modeling, definitions of relevant variables and base year data differ more greatly across the IAMs for the land use components. This, along with the importance of retaining continuity at grid cell level with historical data, required more extensive harmonization activities (i.e. minimizing the difference between historical reconstruction and future projections, and preserving as much information from IAMs as possible). As a first step, general agreement on the 2005 global land-use definitions and values was reached. Prior to harmonization, inconsistencies in definitions of cropland, pasture, and wood harvest resulted in significant discrepancies between IAM values for their initial year (2005), and the HYDE 3.1 or FAO final year values (also 2005). With consistent definitions and reanalysis, these inconsistencies were reduced to <12% for 2005 between HYDE 3.1, FAO and the IAMs, except for RCP8.5 (MESSAGE) pasture (Hurtt et al. 2011). Subsequently, the IAM decadal changes in land use were aggregated over a 2°×2° grid, and these changes were applied sequentially to the 2005 land-use distribution of HYDE3.1. As a basic rule, future land use for the RCPs was based on the absolute changes in the IAM output, combined with 2005 historical data. The resulting 2°×2° grids were then disaggregated into 0.5°×0.5° grids.

The RCPs cover a very wide-range of land-use scenario projections. This is illustrated by the trends shown in Fig. 5 (i.e. after harmonization). The use of cropland and grasslands increases in RCP8.5, mostly driven by an increasing global population. Cropland also increases in the RCP2.6, but largely as a result of bio-energy production. The use of grassland is more-or-less constant in the RCP2.6, as the increase in production of animal



**Fig. 5** Land use (crop land and use of grass land) across the RCPs. Grey area indicates the 90th percentile of scenarios reported in the literature (taken from Smith et al. 2010). Vegetation is defined as the part not covered by cropland or anthropogenically used grassland



products is met through a shift from extensive to more intensive animal husbandry. The RCP6 shows an increasing use of cropland but a decline in pasture. This decline is caused by a similar trend as noted for RCP2.6, but with a much stronger implementation. Finally, the RCP4.5 shows a clear turning point in global land use based on the assumption that carbon in natural vegetation will be valued as part of global climate policy. As a result of reforestation programs, the use of cropland and grassland decreases, following considerable yield increases and dietary changes. In comparison with the general scenario literature, the range covered by the RCPs is wider as it not only includes pathways of continuing expansion of agricultural land use, but also those that show a contraction of agricultural land.

The four different RCPs also produced different patterns of future land use. By 2100, in RCP8.5, areas of high-density cropland are evident in the United States, Europe, and South-East Asia. High-density pasture areas are evident in the Western United States, Eurasia, South Africa, and Australia. Primary forest is most concentrated in northern high latitudes, and parts of Amazonia, while secondary vegetation is common in the United States, Africa, South America and Eurasia. Patterns from RCP6 are broadly similar, but clearly with less pasture generally and especially in the United States, Africa, Eurasia and Australia. RCP4.5 has less cropland overall than either of the previous RCPs, more land with no fractional cropland, and high-density areas of secondary vegetation in the United States, Africa and Eurasia. Spatial patterns from RCP2.6 are broadly similar to those of RCP4.5.

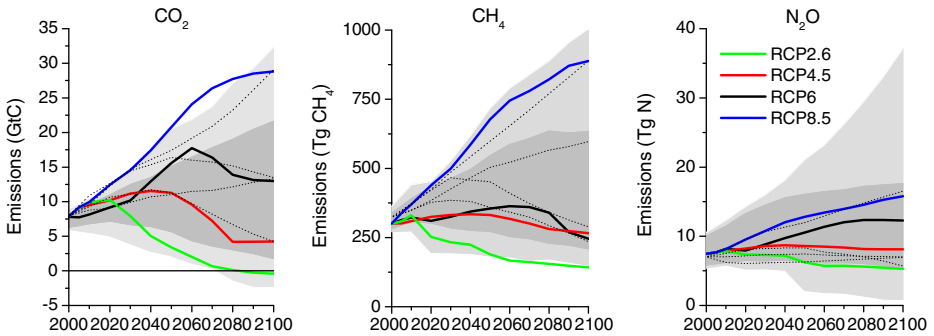
### 3.3 Emissions

#### 3.3.1 Greenhouse gas emissions

Emission and concentrations were harmonized to available historical data for the 2000–2005 period. For CO<sub>2</sub> emissions from land-use change, in contrast, the average of the four RCP models was used as the 2005 harmonization value. On an aggregate scale, the difference between the original data and the final harmonized data are generally small. For the RCP2.6, RCP4.5 and RCP8.5 scenarios, the difference in total CO<sub>2</sub> equivalent greenhouse gas emissions of 2005 was 2 to 4%, with 10% difference for the RCP6 scenario. The difference between the harmonized and unharmonized scenarios for cumulative emissions over the 2000–2050 period in total CO<sub>2</sub> equivalent emissions is expected to be 1 to 2%, except for the RCP6 scenario, which has a difference of 5% (Meinshausen et al. 2011b).

The CO<sub>2</sub> emissions of the four RCPs correspond well with the literature range, which was part of their selection criterion (Fig. 6). The RCP8.5 is representative of the high range of non-climate policy scenarios. Most non-climate policy scenarios, in fact, predict emissions of the order of 15 to 20 GtC by the end of the century, which is close to the emission level of the RCP6. The forcing pathway of the RCP4.5 scenario is comparable to a number of climate policy scenarios and several low-emissions reference scenarios in the literature, such as the SRES B1 scenario. The RCP2.6 represents the range of lowest scenarios, which requires stringent climate policies to limit emissions.

The trends in CH<sub>4</sub> and N<sub>2</sub>O emissions are largely due to differences in the assumed climate policy along with differences in model assumptions (Fig. 6). Emissions of both CH<sub>4</sub> and N<sub>2</sub>O show a rapidly increasing trend for the RCP8.5 (no climate policy and high population). For RCP6 and RCP4.5, CH<sub>4</sub> emissions are more-or-less stable throughout the century, while for RCP2.6, these emissions are reduced by around 40%. The low emission trajectories for CH<sub>4</sub> are a net result of low cost emission options for some sources (e.g. from energy production and transport), and a limited reduction for others (e.g. from livestock).



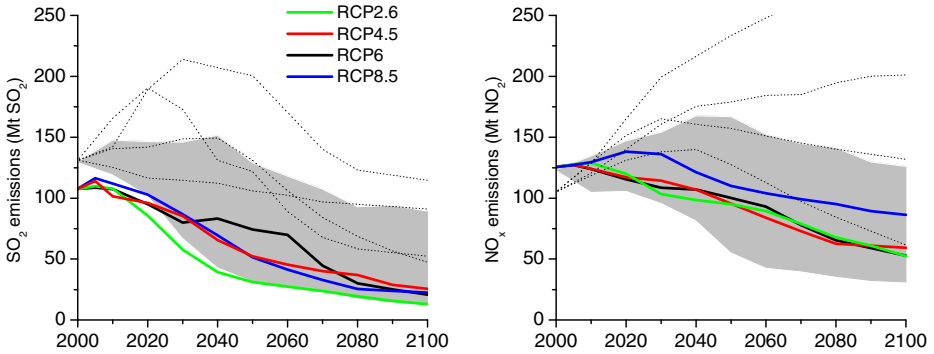
**Fig. 6** Emissions of main greenhouse gases across the RCPs. Grey area indicates the 98th and 99th percentiles (light/dark grey) of the literature (for references, see Figure 4). The dotted lines indicate four of the SRES marker scenarios. Note that the literature values are obviously not harmonized (see text)

Introduction of climate policy, thus, may lead to significant emission reductions, even in the short term, but will not eliminate emissions altogether. While the RCP  $\text{CH}_4$  emissions are within the ranges from the literature, there is a significant gap between RCP2.6, RCP4.5 and RCP6 on the one hand and the high-emission RCP8.5 scenario on the other. For  $\text{N}_2\text{O}$ , the scenarios are placed in similar order, although here the emissions for RCP4.5 remain stable while those for RCP6 increase over time. In this case, the RCPs do not cover the full range in the literature, but only the more representative range. One may, however, question the studies that indicate very rapidly increasing and decreasing  $\text{N}_2\text{O}$  emissions, given the main sources of  $\text{N}_2\text{O}$  (these are mostly agricultural and will grow at a modest rate, in the future, but to some degree are also difficult to abate). It is important to recognize that there is substantial uncertainty in base-year emissions for many substances (Granier et al. 2011). The RCP scenarios, due to the design of the harmonization process, do not fully represent this uncertainty.

### 3.3.2 Emissions of atmospheric air pollutants

The RCPs generally exhibit a declining trend of air polluting emissions. The emission trends for air pollutants are determined by three factors: the change in driving forces (fossil-fuel use, fertilizer use), the assumed air pollution control policy, and the assumed climate policy (as the last induces changes in energy consumption leading to changes (generally reductions) in air polluting emissions). We have illustrated the trends in air pollutants by looking at  $\text{SO}_2$  and  $\text{NO}_x$  (Fig. 7). In general, similar trends can be seen for other air pollutants.

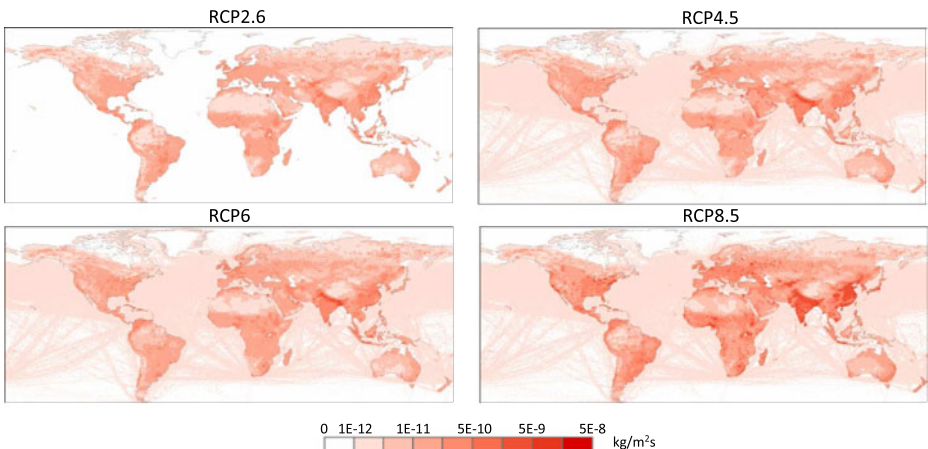
All RCPs include the assumption that air pollution control becomes more stringent, over time, as a result of rising income levels. Globally, this would cause emissions to decrease, over time—although trends can be different for specific regions or at particular moments in time. A second factor that influences the results across the RCPs is climate policy. In general, the lowest emissions are found for the scenario with the most stringent climate policy (RCP2.6) and the highest for the scenario without climate policy (RCP8.5), although this does not apply to all regions, at all times. The overall correlation is a result of the fact that climate policy induces systemic changes in the energy system, away from technologies with high greenhouse gas emission levels, which also have high emissions of air pollutants (e.g. coal use without CCS has high emission levels of  $\text{CO}_2$ , but also of  $\text{SO}_2$ ). In contrast, the application of energy efficiency or use of renewables reduces both greenhouse gas



**Fig. 7** Emissions of  $\text{SO}_2$  and  $\text{NO}_x$  across the RCPs. Grey area indicates the 90th percentile of the literature (only scenarios included in Van Vuuren et al. 2008b, i.e. 22 scenarios; the scenarios were also harmonized for their starting year—but using a different inventory). Dotted lines indicate SRES scenarios. The different studies use slightly different data for the start year

emissions and air pollutants. The range of air pollution projections, generally, is smaller than that found in the literature. This is mostly due to the RCPs' shared assumption of stringent air pollution policies increasing proportionally with income (van Ruijven et al. 2008). As such, one may conclude that the RCPs show a range of plausible development pathways for air pollutants and policy interventions, but they are not fully representative of the literature on air polluting emissions, as the set does not include scenarios which assume that very little or no reduction of emissions will be achieved. This may limit the use of the RCPs for specific air pollution applications.

The emissions in the RCPs have been downscaled to  $0.5^\circ \times 0.5^\circ$  grids per sector (Masui et al. 2011; Riahi et al. 2011; Thomson et al. 2011; Van Vuuren et al. 2011a)—allowing their use in atmospheric climate and chemistry models (Fig. 8). The results show that for most gases, emissions are concentrated in specific areas (e.g. Eastern United States, Western Europe, Eastern China and India). Moreover, a general trend can be noted across all RCPs and gases, indicating that emissions tend to become relatively more concentrated in currently low-income regions.



**Fig. 8** Emission pattern for 2100, for  $\text{CH}_4$  across the four RCPs

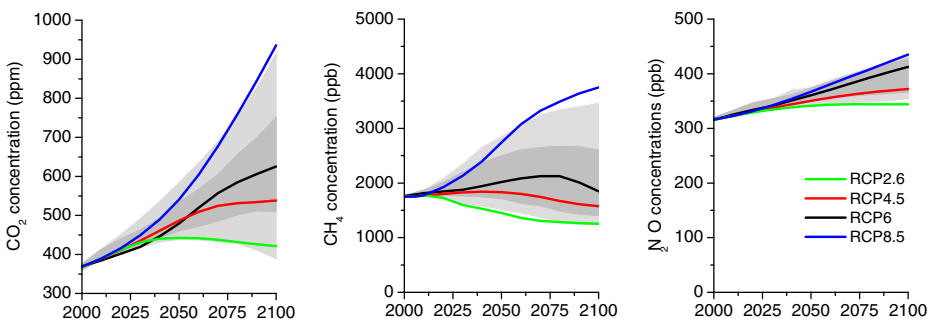
### 3.4 Concentrations of greenhouse gases

The greenhouse gas concentrations in the RCPs closely correspond to the emissions trends discussed earlier (Fig. 9). For CO<sub>2</sub>, RCP8.5 follows the upper range in the literature (rapidly increasing concentrations). RCP6 and RCP4.5 show a stabilizing CO<sub>2</sub> concentration (close to the median range in the literature). Finally, RCP2.6 has a peak in CO<sub>2</sub> concentrations around 2050, followed by a modest decline to around 400 ppm CO<sub>2</sub>, by the end of the century. For CH<sub>4</sub> and N<sub>2</sub>O, the order in which the RCPs can be placed are also a direct result of the assumed level of climate policy. The trends in CH<sub>4</sub> concentrations are more pronounced, as a result of the relatively short lifetime of CH<sub>4</sub>. Emission reductions, as in the RCP2.6 and RCP4.5, therefore, may lead to an emission peak much earlier in the century. For N<sub>2</sub>O, in contrast, a relatively long lifetime and a modest reduction potential imply an increase in concentrations, in all RCPs. For both CH<sub>4</sub> and N<sub>2</sub>O, the concentration levels correspond well with the range in the literature. Further information on the calculations of concentration can be found in Meinshausen et al. (2011b)

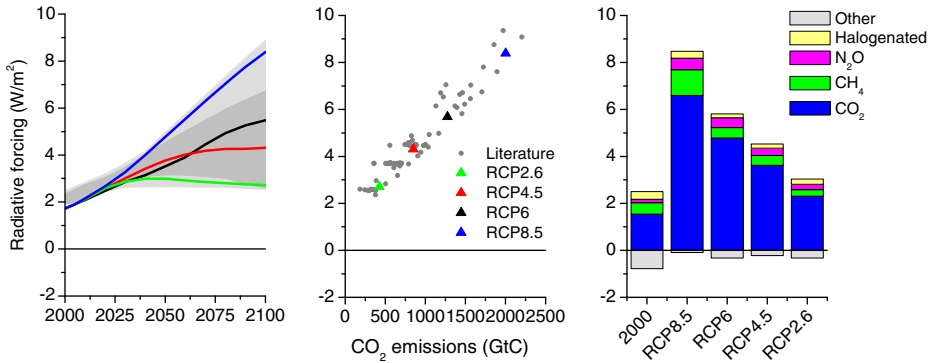
The combination of trends in greenhouse gases and those in atmospheric pollutants translate to changes in concentrations affecting the overall development of radiative forcing. As shown in Fig. 10, the RCPs, as specified in the original selection criteria, cover the trends and level of radiative forcing values of scenarios in the literature very well. Total radiative forcing is determined by both positive forcing from greenhouse gases and negative forcing from aerosols. The most dominant factor, by far, is the forcing from CO<sub>2</sub>. As a result, both for the RCPs and in the overall literature, 2100 radiative forcing levels are correlated with cumulative 21st century CO<sub>2</sub> emissions (see middle panel of Fig. 10). Thus, it is not surprising that the RCPs are consistent with the literature, both in terms of total forcing and cumulative CO<sub>2</sub> emissions (over the course of the century).

### 3.5 Concentration of air pollutants

For tropospheric ozone (driven by the changes in NO<sub>x</sub>, VOC, OC and methane emissions, along with changes in climate conditions), there is a clear difference between the RCPs. For RCP8.5, radiative forcing from tropospheric ozone, according to the CAM3.5 calculations, increases by an additional 0.2 W/m<sup>2</sup> by 2100 (Lamarque et al. 2011). In contrast, there is a decrease in radiative forcing, for RCP4.5 and RCP2.6, of 0.07 and 0.2 W/m<sup>2</sup>,



**Fig. 9** Trends in concentrations of greenhouse gases. Grey area indicates the 98th and 90th percentiles (light/dark grey) of the recent EMF-22 study (Clarke et al. 2010)



**Fig. 10** Trends in radiative forcing (left), cumulative 21st century CO<sub>2</sub> emissions vs 2100 radiative forcing (middle) and 2100 forcing level per category (right). Grey area indicates the 98th and 90th percentiles (*light/dark grey*) of the literature. The dots in the middle graph also represent a large number of studies. Forcing is relative to pre-industrial values and does not include land use (albedo), dust, or nitrate aerosol forcing

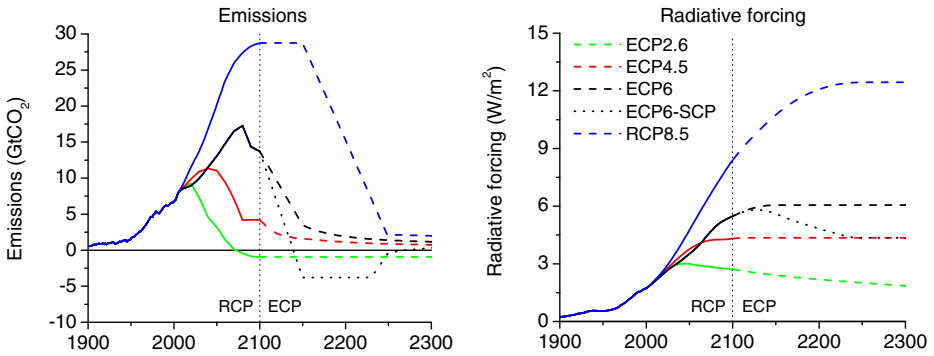
respectively (again CAM3.5). This is the result of assumed trends in air pollution control and climate policy.

Aerosol concentrations eventually decrease in all RCPs, following the strong decrease in emissions, especially those of anthropogenic SO<sub>2</sub>. This is very different from some of the SRES scenarios. However, the new insights into implementation of air pollution control measures were developed more recently, which were not comprehensively included in the SRES (Smith and Wigley 2006). Moreover, the SRES scenarios did not include climate policy measures. While there is a reduction in the impact of aerosols, at a global level, for some tropical regions, a shift towards higher concentrations is also reported. Finally, for nitrogen deposition, a decrease can be observed across the RCPs for most high-income regions. However, in many developing regions, an increase in nitrogen deposition is projected for the end of the 21st century, mostly related to the projected increases in NH<sub>3</sub> emissions due to agricultural activities.

The MAGICC model used for calculating greenhouse gas concentrations results in tropospheric and stratospheric forcing levels that are slightly different from those of the more complex model used for the atmospheric chemistry calculations (Lamarque et al. 2011). For stratospheric ozone, this is related to the MAGICC model assumption of stratospheric ozone being solely driven by the amount of ozone-depleting substances. Full chemistry-climate model simulations (Lamarque et al. 2011) indicate that climate change is an important additional component in the evolution of stratospheric ozone. These small differences in ozone forcing, however, are only a very small fraction of total forcing in the RCP scenarios.

### 3.6 Extending the RCPs to 2300

Figure 11 shows the CO<sub>2</sub> emissions and radiative forcing trajectories for each of the four extensions of the RCPs (ECPs). As explained in the method sections, these have not been based on integrated assessment modeling, but on simple extension rules consistent with the rationale of each of the RCPs to which they connect (see Table 3). This has resulted in a set of extended concentration pathways to be used for climate model runs. Still, it is useful to examine the implied changes in emissions. For CO<sub>2</sub>, these are also shown in Fig. 11. The figure indicates that the simple extension rules (stabilization of RF for ECP8.5, ECP6 and ECP4.5 at 12, 6 and 4.5 W/m<sup>2</sup>, respectively) imply considerable reductions in CO<sub>2</sub> emission



**Fig. 11** Extension of the RCPs (radiative forcing and associated CO<sub>2</sub> emissions). ECP is extended concentration pathway. The SCP6to4.5 (supplementary concentration pathway) shows an alternative extension for RCP6 (see main text) (Meinshausen et al. 2011b)

beyond 2100. For the last two ECPs, this can be seen as a continuation of the trends of before 2100. For ECP8.5, this, in fact, implies a major trend break and an emission reduction, between 2150 and 2250, which reduces emissions at a similar rate as in RCP2.6 before 2100, but over 2 to 3 times the total emission volume. For ECP3PD, the assumed continuation of negative emissions implies that sufficient storage capacity will be found to store CO<sub>2</sub> from bio-energy, CCS use, or other technologies that may remove CO<sub>2</sub> from the atmosphere. Storage before 2100 (of emissions from bio-energy and fossil fuels) equals about 600 GtC. Assuming that after 2100 the storage potential only will be used for bio-energy and CCS (BECCS), the continuation of the scenario would at least require another 200 GtC. Optimistic estimates of storage potential are consistent with these numbers. By 2300, this scenario would result in a radiative forcing at roughly the same level as in 2000. Finally, a special extension was added to explore the difference in impacts from direct stabilization at 4.5 W/m<sup>2</sup> and an initial overshoot to 6.0 W/m<sup>2</sup> (SCP6to4.5). The extension shows that such an overshoot scenario would be possible, but would require a very abrupt emission reduction from the 6.0 W/m<sup>2</sup> profile and a long period of negative CO<sub>2</sub> emissions. In other words, this would be a scenario that would be relatively hard to achieve (Meinshausen et al. 2011b).

## 4 Discussion and conclusions

### 4.1 Discussion

In the previous sections, we have shown the RCPs to be consistent with their design criteria. Given their comprehensiveness in terms of sources covered, as well as in spatial detail, they provide a unique basis for detailed climate model runs. The RCPs provide a range of emission and concentrations consistent with the full range in the recent literature (see Table 4; Figs. 6, 9 and 10, and Section 2). In particular, the RCPs allow the exploration of possible climate futures over a wider range than previously possible, since they extend beyond the low forcing levels previously considered by global climate model projections. Compared to the overall literature, RCP8.5 should be seen as a high emission scenario, RCP6 can be interpreted as either a medium baseline or a high mitigation case, RCP4.5 can be considered either as an intermediate mitigation scenario, while finally RCP2.6 is representative of the lowest mitigation scenarios currently in the literature (Table 4). The

**Table 4** Main characteristics of each RCP

| Scenario Component       | RCP2.6                          | RCP4.5                                     | RCP6   | RCP8.5                               |
|--------------------------|---------------------------------|--|--|--------------------------------------|
| Greenhouse gas emissions | Very low                        | Medium-low mitigation<br>Very low baseline | Medium baseline;<br>high mitigation                      | High baseline                        |
| Agricultural area        | Medium for cropland and pasture | Very low for both cropland and pasture     | Medium for cropland but very low for pasture (total low) | Medium for both cropland and pasture |
| Air pollution            | Medium-Low                      | Medium                                     | Medium   | Medium-high                          |

information on the RCPs has been made available at a level of detail that would allow climate and chemistry model runs.

It can be expected that the RCPs will be used in a wide range of policy-experiments. The following uses are foreseen:

- 1) *Input for climate modeling.* A large number of experiments have been proposed on the basis of the RCPs ((Hibbard et al. 2007; Taylor et al. 2011)). These will, among others, examine climate change as a function of different forcing levels and the carbon flows associated with various CO<sub>2</sub> concentration levels. The RCP2.6 allows to for the first time to perform model comparison studies at low and reducing forcing levels. Finally, the comprehensive information on greenhouse gases, atmospheric pollutants and land-use change allow analysts to look into the contribution of different forcing categories.
- 2) *Input into mitigation analysis.* The different RCP levels and their trajectories are expected to stimulate research on the mitigation action and socio-economic conditions that would be consistent with a given concentration pathways (replication experiments using different models and assumptions). This, for instance, includes research on the influence of different expectations with respect to technology change and the policy conditions (e.g. the contribution of various regions to climate policy) (using similar methods as in earlier modeling exercises such as EMF-22 (Clarke et al. 2010)).
- 3) *Input into impact assessment.* After completion of the climate model runs, the RCPs may also be used in new research on the impacts of climate change. For this, also information on future socio-economic conditions will be needed. Different papers discuss how this may be done (Van Vuuren et al. 2011b; Kriegler et al. 2011).
- 4) *Form an analytical thread.* The RCPs have already facilitated a closer cooperation across different disciplines involved in climate research during their development and are expected to provide a consistent analytical thread running through climate change research.

The information in this paper also reveals several limitations associated with the use of the RCPs that need to be kept in mind:

- *The RCPs should not be interpreted as forecasts or absolute bounds, or be seen as policy prescriptive.* The RCPs describe a set of possible developments in emissions and land use, based on consistent scenarios representative of current literature (see Section 2). The RCPs should clearly not be interpreted as boundaries for possible developments with respect to emissions and land use. Similarly, while the RCPs may be used to identify the range of climate impacts associated with different anthropogenic forcing levels, they are not meant to be policy prescriptive, (i.e. no likelihood or preference is attached to any of the individual scenarios of the set). At the same time, the use of the RCPs in climate research may provide important information for decision-making.

- *The socio-economic scenarios underlying the RCPs cannot be treated as a set with an overarching internal logic.* The RCPs have not been designed as a new, fully integrated set of scenarios; the focus in the development process has been on providing a consistent set of projections for components of radiative forcing (emissions and land use) by using scenarios available from the literature. The underlying scenarios are independent efforts developed by four individual modeling groups; this implies that the RCPs do not necessarily form a comprehensive set for elements other than the emissions and concentrations of the main greenhouse gases and associated radiative forcing. For instance, the RCPs with lower radiative forcing (RCP4.5 and RCP2.6) are not derived from those with higher radiative forcing (e.g. RCP6.0 and RCP8.5). Differences between the RCPs, therefore, cannot be directly interpreted as a result of climate policy or particular socio-economic developments. Differences may very well result from differences between models. For instance, in many models it might not be possible to reach the lowest stabilization targets from baseline scenarios in which emissions are as high as in RCP8.5.
- *The socio-economic scenarios underlying each RCP should not be considered unique.* Each RCP is based on a scenario from the literature that includes a socio-economic development pathway. However, the socio-economic scenario underlying each RCP is just one of many possible scenarios that could be consistent with the concentration pathway. This implies that additional work is needed to allow some further analysis, such as impact assessments on the basis of the RCPs. This work is planned in subsequent phases of the scenario development (Moss et al. 2010) and, in fact, individual modeling groups are strongly encouraged to reproduce the land-use and emission pathways of the RCPs, on the basis of various socio-economic assumptions (see also Section 4.2).
- *Certain characteristics of individual RCPs may play a role in interpreting their results. Further research is needed to explore sensitivity of results to these characteristics.* The fact that the RCPs are derived from individual model runs is relevant in interpreting the projections for scenario elements that are only indirectly coupled to the radiative forcing targets, such as land use/land cover, socio-economic parameters, and, to some degree, emissions of short-lived species. The main characteristics of each of the RCPs is summarized in Table 4. The logic for the land-use patterns is related to the model-specific assumptions of each RCP and not just to the target radiative forcing level. Climate policy may have clear consequences for land-use patterns, but these have been included in RCPs in different ways. For instance, the reforestation policies assumed in the RCP4.5 might also be possible in RCP2.6. Similarly, the assumed baseline trends in land use are not specific to any RCP level. Climate impacts of the land-use patterns (such as albedo), therefore, cannot be directly attributed to the level of climate policy in each RCP, but need to be traced to model-specific assumptions. Therefore, it may be very important to consider how these scenario-specific impacts could be dealt with in pattern scaling exercises on the basis of RCP climate modeling results. This, for instance, could be explored by specific experiments in which land-use changes are switched off. For air pollution emissions (and concentrations), the RCPs at the global level are more-or-less ordered along the radiative forcing axis, as could be expected on the basis of the co-benefits. However, at the regional level, model-specific assumptions may dominate and differences between RCPs are often small. The fact that all RCPs assume increasingly stringent air pollution control policies implies that the RCPs are not suitable for analysis of possible trends in air pollution under less optimistic assumptions.



- *There are uncertainties in the translation of emissions profiles to concentrations and radiative forcing.* We have used several methods for developing consistent sets of emissions, concentrations and radiative forcing pathways—in particular using the CAM3.5 atmospheric chemistry model and the MAGICC-6 simple carbon-cycle climate model. However, there are considerable uncertainties involved. As a result, the current set of RCPs represents one possible set of assumptions with regard to this translation. As the RCPs are used as input in all major global climate models, some of these uncertainties will be revealed as part of the activities that are currently under way. Further coordination of uncertainty analyses in subsequent phases by the climate modeling community and IAM community may further contribute to this.

## 4.2 Conclusions

The RCPs represent an important step in the development of new scenarios for climate research.

- *The RCPs provide a unique set of data, particularly with respect to comprehensiveness and detail, as well as spatial scale of information for climate model projections.* In the previous sections, we have shown the RCPs to be consistent with their selection criteria and to provide a good basis for exploring the range of climate outcomes by the climate modeling community. The scenarios cover a range of radiative forcing pathways consistent with those in the current literature. The same holds for the development of individual greenhouse gases, CO<sub>2</sub>, CH<sub>4</sub>, and N<sub>2</sub>O. The information that is provided for each of the RCPs is also much more elaborated than in previous exercises. Data on land use and air pollution have been made available with sectoral detail for different source categories and in a geographically explicit manner, at 0.5×0.5 degrees. The data on greenhouse gas emissions have been run through one consistent carbon cycle and climate model. The RCPs have also been harmonized with the latest data on historical periods, and the harmonization algorithms have allowed for a smooth transition from the historical periods to the scenario period. The scaling factors used for this harmonization do not distort the original underlying IAM scenarios. This elaborate development process was necessary so that the RCPs may provide a consistent analytical thread that runs across communities involved in climate research.
- *Subsequent phases of the development process of new scenarios for climate change assessment need to focus on defining a framework for socio-economic assumptions and storylines to guide RCP-based mitigation, adaptation and impacts analyses.* While the RCPs are each derived from internally consistent socio-economic assumptions, as a set they do not provide an internal logic nor do they span the full range of socio-economic trajectories in the literature. Hence, there is a need for a community effort similar to the one for defining the climate dimension of the RCPs. This community effort will need to define the socio-economic dimension that would complement the RCPs. This process is planned as part of subsequent activities in the development of new scenarios.

**Acknowledgements** The authors of this paper acknowledge the large contribution to the RCP process provided by many individuals from the Integrated Assessment Modeling, Climate Modeling and Vulnerability-Adaptation-Impact modeling communities.

**Open Access** This article is distributed under the terms of the Creative Commons Attribution Noncommercial License which permits any noncommercial use, distribution, and reproduction in any medium, provided the original author(s) and source are credited.

## References

- Clarke LE, Edmonds JA, Jacoby HD, Pitcher H, Reilly JM, Richels R (2007) Scenarios of greenhouse gas emissions and atmospheric concentrations. Sub-report 2.1a of Synthesis and Assessment Product 2.1. Climate Change Science Program and the Subcommittee on Global Change Research, Washington DC
- Clarke L, Edmonds J, Krey V, Richels R, Rose S, Tavoni M (2010) International climate policy architectures: overview of the EMF 22 international scenarios. *Energy Econ* 31(suppl 2):S64–S81
- EC-JRC/PBL (2009) Emission Database for Global Atmospheric Research (EDGAR), release version 4.0. <http://edgar.jrc.ec.europa.eu>. European Commission, Joint Research Centre (JRC)/Netherlands Environmental Assessment Agency (PBL)
- Edenhofer O, Knopf B, Barker T, Baumstark L, Bellevrat E, Chateau B, Criqui P, Isaac M, Kitous A, Kypreos S, et al. (2010) The Economics of Low Stabilization: Model Comparison of Mitigation Strategies and Costs. *The Energy Journal* 31:11–48
- Ehrlich PR, Holdren JP (1971) Impact of Population Growth. *Science* 171:1212–1217
- Fisher B, Nakicenovic N, Alfsen K, Corfee Morlot J, de la Chesnaye F, Hourcade J-C, Jiang K, Kainuma M, La Rovere E, Matysek A et al (2007) Issues related to mitigation in the long-term context. In: Metz B, Davidson O, Bosch P, Dave R, Meyer L (eds) *Climate change 2007. Mitigation of climate change. Contribution of Working Group III to the Fourth Assessment Report of the Intergovernmental Panel on Climate Change*. Cambridge University Press, New York, pp 169–250
- Fujino J, Nair R, Kainuma M, Masui T, Matsuoka Y (2006) Multigas mitigation analysis on stabilization scenarios using aim global model. *The Energy Journal Special issue #3*:343–354
- Gent PR, Yeager SG, Neale RB, Levis S, Bailey D (2009) Improvements in a half degree atmosphere/land version of the CCSM. *Clim Dyn* 79:25–58
- Granier C, Bessagnet B, Bond T, D'Angiola A, van der Gon HG, Frost G, Heil A, Kainuma M, Kaiser J, Kinne S et al (2011) Evolution of anthropogenic and biomass burning emissions at global and regional scales during the 1980–2010 period. *Climatic Change*. doi: [10.1007/s10584-011-0154-1](https://doi.org/10.1007/s10584-011-0154-1)
- Grübler A, O'Neill B, Riahi K, Chirkov V, Goujon A, Kolp P, Prommer I, Scherbov S, Slentoe E (2007) Regional, national, and spatially explicit scenarios of demographic and economic change based on SRES. *Technol Forecast Soc Chang* 74:980–1029
- Hanaoka TR, Kawase M, Kainuma Y, Matsuoka H, Ishii, Oka K (2006) Greenhouse gas emissions scenarios database and regional mitigation analysis. NIES, Tsukuba
- Hibbard KA, Meehl G, Cox P, Friedlingstein P (2007) A strategy for climate change stabilization experiments. *Eos* 88:217–221
- Hibbard KA, Janetos A, van Vuuren DP, Pongratz J, Rose SK, Betts R, Herold M, Feddema JJ (2010) Research priorities in land use and land cover change for the earth system and integrated assessment modeling. *Journal of Climate*: doi: [10.1002/joc.2150](https://doi.org/10.1002/joc.2150)
- Hijioka Y, Matsuoka Y, Nishimoto H, Masui T, Kainuma M (2008) Global GHG emission scenarios under GHG concentration stabilization targets. *J Glob Environ Eng* 13:97–108
- Hurtt GC, Pacala SW, Malyshev S, Moorcroft PR, Caspersen J, Shevliakova E, Houghton RA, Moore B III (2002) Projecting the future of the U.S. carbon sink. *Proc Natl Acad Sci USA* 99:1389–1394
- Hurtt GC, Frolking S, Fearon MG, Moore B, Shevliakova E, Malyshev S, Pacala SW, Houghton RA (2006) The underpinnings of land-use history: three centuries of global gridded land-use transitions, wood-harvest activity, and resulting secondary lands. *Glob Chang Biol* 12:1208–1229
- Hurtt GC, Chini LP, Frolking S, Betts R, Fedema J, Fischer G, Klein Goldewijk K, Hibbard KA, Janetos A, Jones C et al (2009) Harmonization of Global Land-Use Scenarios for the Period 1500–2100 for IPCC-AR5. *Integrated Land Ecosystem-Atmosphere Processes Study (iLEAPS) Newsletter* 7:6–8
- Hurtt G, Chini L, Frolking S, Betts R, Edmonds J, Feddema J, Fisher G, Goldewijk KK, Hibbard KA, Houghton R et al (2011) Land use Change and earth system dynamics. *Climatic Change*. doi: [10.1007/s10584-011-0153-2](https://doi.org/10.1007/s10584-011-0153-2)
- IPCC (2007) Report of the 26th session of the IPCC. Bangkok. April 30–May 4 2007. Intergovernmental Panel on Climate Change, Geneva, Switzerland
- Kaya (1989) Impacts of carbon dioxide emissions on GWP: interpretation of proposed scenarios. IPCC/Response Strategies Working Group, Geneva
- Klein Goldewijk K, Beusen A, de Vos M, van Drecht G (2010) The HYDE 3.1 spatially explicit database of human induced land use change over the past 12,000 years *Global Ecology and Biogeography*
- Kriegler E, O'Neill B, Hallegatte S, Kram T, Lempert R, Moss R, Wilbanks T (2011) Socioeconomic scenario development for climate change analysis. *Global Environmental Change Submitted*
- Lamarque J-F, Bond TC, Eyring V, Granier C, Heil A, Klimont Z, Lee D, Liousse C, Mieville A, Owen B, et al. (2010) Historical (1850–2000) gridded anthropogenic and biomass burning emissions of reactive gases and aerosols: methodology and application. *Atmos Chem Phys Discuss* 10

- Lamarque JF, Page Kyle G, Meinshausen M, Riahi K, Smith S, van Vuuren DP, Conley AJ, Vitt F (2011) Global and regional evolution of short-lived radiatively-active gases and aerosols in the Representative Concentration Pathways. *Climatic change*. doi: [10.1007/s10584-011-0155-0](https://doi.org/10.1007/s10584-011-0155-0)
- Leggett J, Pepper W, Swart RJ (1992) Emissions Scenarios for the IPCC: an Update. In: Houghton JT, Callander BA, Varney SK (eds) *Climate change 1992. The Supplementary Report to the IPCC Scientific Assessment*. Cambridge University Press, Cambridge, pp 71–95
- Masui T, Matsumoto K, Hijioka Y, Kinoshita T, Nozawa T, Ishiwatari S, Kato E, Shukla PR, Yamagata Y, Kainuma M (2011) A emission pathway to stabilize at 6 W/m<sup>2</sup> of radiative forcing. *Climatic Change*. doi: [10.1007/s10584-011-0150-5](https://doi.org/10.1007/s10584-011-0150-5)
- Meehl GA, Hibbard K (2006) Earth system models: the next generation. Report of the session July 30–August 5, 2006. Aspen Global Change Institute, Aspen
- Meinshausen M, Raper SCB, Wigley TML (2011a) Emulating coupled atmosphere-ocean and carbon cycle models with a simpler model, MAGICC6—Part 1: Model description and calibration. *Atmos Chem Phys* 11:1417–1456
- Meinshausen M, Smith SJ, Calvin K, Daniel JS, Kainuma MLT, Lamarque J-F, Matsumoto K, Montzka SA, Raper S, Riahi K et al (2011b) The RCP greenhouse gas concentrations and their extensions from 1765 to 2300. *Climatic Change*. doi: [10.1007/s10584-011-0156-z](https://doi.org/10.1007/s10584-011-0156-z)
- Meinshausen M, Wigley TML, Raper SCB (2011c) Emulating atmosphere-ocean and carbon cycle models with a simpler model, MAGICC6—Part 2: applications. *Atmos Chem Phys* 11:1457–1471
- Moss R, Babiker M, Brinkman S, Calvo E, Carter T, Edmonds J, Elgizouli I, Emori S, Erda L, Hibbard KA et al (2008) Towards new scenarios for analysis of emissions, climate change, impacts, and response strategies. IPCC Expert Meeting Report on New Scenarios. Intergovernmental Panel on Climate Change, Noordwijkerhout
- Moss RH, Edmonds JA, Hibbard KA, Manning MR, Rose SK, van Vuuren DP, Carter TR, Emori S, Kainuma M, Kram T et al (2010) The next generation of scenarios for climate change research and assessment. *Nature* 463:747–756
- Nakicenovic et al (2000) *Special Report on Emissions Scenarios (SRES)*. Cambridge University Press, Cambridge
- Randall DA, Wood RA, Bony S, Colman R, Fichetef T, Fyfe J, Kattsov V, Pitman A, Shukla J, Srinivasan J et al (2007) Climate models and their evaluation. In: Solomon S, Qin D, Manning M, Chen Z, Marquis M, Averyt KB, Tignor M, Miller HL (eds) *Climate change 2007: The physical science basis. Contribution of Working Group I to the Fourth Assessment Report of the Intergovernmental Panel on Climate Change*. Cambridge University Press, Cambridge
- Riahi K, Grübler A, Nakicenovic N (2007) Scenarios of long-term socio-economic and environmental development under climate stabilization. *Technol Forecast Soc Chang* 74:887–935
- Riahi K, Krey V, Rao S, Chirkov V, Fischer G, Kolp P, Kindermann G, Nakicenovic N, Rafai P (2011) RCP-8.5: exploring the consequence of high emission trajectories. *Climatic Change*. doi: [10.1007/s10584-011-0149-y](https://doi.org/10.1007/s10584-011-0149-y)
- Rose S, Ahammad H, Eickhout B, Fisher B, Kurosawa A, Rao S, Riahi K, Van Vuuren DP (2011) Land-based mitigation in climate stabilization. *Energy Economics*. doi: [10.1016/j.eneco.2011.06.004](https://doi.org/10.1016/j.eneco.2011.06.004)
- Shevliakova E, Pacala SW, Malyshev S, Hurtt GC, Milly PCD, Casperson JP, Sentman LT, Fisk JP, Wirth C, Crevoisier C (2009) Carbon cycling under 300 years of land use change: importance of the secondary vegetation sink. *Global Biogeochemical Cycles* 23:doi:[10.1029/2007GB003176](https://doi.org/10.1029/2007GB003176)
- Smith SJ, Wigley TML (2006) MultiGas forcing stabilization with minicam. *The Energy Journal Special issue* #3:373–392
- Smith P, Gregory PJ, Van Vuuren DP, Obersteiner M, Havlík P, Rounsevell M, Woods J, Stehfest E, Bellarby J 881 (2010) Competition for land. *Phil Trans R Soc B: Biol Sci* 365:2941–2957
- Taylor KE, Stouffer RJ, Meehl GA (2011) A summary of the CMIP5 experiment design. [http://cmip-pcmdi.llnl.gov/cmip5/docs/Taylor\\_CMIP5\\_design.pdf](http://cmip-pcmdi.llnl.gov/cmip5/docs/Taylor_CMIP5_design.pdf)
- Thomson AM, Calvin KV, Smith SJ, Kyle GP, Volke A, Patel P, Delgado-Arias S, Bond-Lamberty B, Wise MA, Clarke LE et al (2011) RCP4.5: a pathway for stabilization of radiative forcing by 2100. *Climatic Change*. doi: [10.1007/s10584-011-0151-4](https://doi.org/10.1007/s10584-011-0151-4)
- UN (2003) Long-range world population projection (1950–2300). Based on the 2002 revision. United Nations, New York
- Van Aardenne JA, Dentener FJ, Olivier JGJ, Klein Goldewijk CGM, Lelieveld J (2001) A 1×1 degree resolution dataset of historical anthropogenic trace gas emissions for the period 1890–1990. *Global Biogeochem Cy* 15(4):909–928
- Van Ruijven B, Urban F, Benders RMJ, Moll HC, van der Sluijs JP, de Vries B, van Vuuren DP (2008) Modeling Energy and development: an evaluation of models and concepts. *World Dev* 36:2801–2821
- Van Vuuren DP, Riahi K (2011) The relationship between short-term emissions and long-term concentration targets—a letter. *Climatic Change* 104, Issue 3–4, 793–801

- Van Vuuren DP, Eickhout B, Lucas PL, den Elzen MGJ (2006) Long-term multi-gas scenarios to stabilise radiative forcing—exploring costs and benefits within an integrated assessment framework. *Energ J* 27:201–233
- Van Vuuren DP, Den Elzen MGJ, Lucas PL, Eickhout B, Strengers BJ, Van Ruijven B, Wonink S, Van Houdt R (2007a) Stabilizing greenhouse gas concentrations at low levels: an assessment of reduction strategies and costs. *Clim Chang* 81:119–159
- Van Vuuren DP, Lucas PL, Hilderink H (2007b) Downscaling drivers of global environmental change: enabling use of global SRES scenarios at the national and grid levels. *Glob Environ Chang* 17:114–130
- Van Vuuren DP, Feddema J, Hibbard K, Hurtt G, Lamarque JF, Riahi K, Rose S, Smith S (2008a) Draft work plan for data exchange between the Integrated assessment and Climate Modeling community in support of the Preparatory Phase of scenario analysis for climate change assessment (Representative Concentration Pathways). [http://www.aimes.ucar.edu/docs/RCP\\_handshake.pdf](http://www.aimes.ucar.edu/docs/RCP_handshake.pdf)
- Van Vuuren DP, Meinshausen M, Plattner GK, Joos F, Strassmann KM, Smith SJ, Wigley TML, Raper SCB, Riahi K, De La Chesnaye F et al (2008b) Temperature increase of 21st century mitigation scenarios. *Proc Natl Acad Sci USA* 105:15258–15262
- Van Vuuren DP, Stehfest E, Den Elzen MGJ, Deetman S, Hof A, Isaac M, Klein Goldewijk K, Kram T, Mendoza Beltran A, Oostenrijk R et al (2011a) RCP2.6: Exploring the possibility to keep global mean temperature change below 2°C. *Climatic Change*. doi: 10.1007/s10584-011-0152-3
- Van Vuuren DP, Riahi K, Moss R, Thomson A, Nakićenović N, Edmonds J, Kram T, Berkhout F, Swart R, Janetos A et al (2011b) Developing new scenarios as a thread for future climate research. *Global Environmental Change* (accepted)
- Weyant J, Davidson O, Dowlatabadi H, Edmonds J, Grubb M, Richels R, Rotmans J, Shukla P, Cline W, Fankhauser S et al (1996) Integrated assessment of climate change: an overview and comparison of approaches and results. In: Bruce JP, Lee H, Haites EF (eds) *Climate change 1995—Economic and Social Dimensions of Climate Change*. Contribution of Working Group III to the Second Assessment Report of the Intergovernmental Panel on Climate Change (IPCC). Cambridge University Press, Cambridge
- Weyant JP, Azar C, Kainuma M, Kejun J, Nakicenovic N, Shukla PR, La Rovere E, Yohe G (2009) Report of 2.6 Versus 2.9 Watts/m<sup>2</sup> RCP Evaluation Panel. Integrated Assessment Modeling Consortium
- Wise M, Calvin K, Thomson A, Clarke L, Bond-Lamberty B, Sands R, Smith SJ, Janetos A, Edmonds J (2009) Implications of limiting CO<sub>2</sub> concentrations for land use and energy. *Science* 324:1183–1186